

# eco rugs

Designed to last forever

COLLECTION 2024



Sustainability with style



## Our philosophy

Our philosophy is based on a single concept: we are more than just a manufacturer of carpets, we're a home decorator with the creativity to inspire beautiful interiors and transform the generic into magic.

Because people are seeking beauty, elegance, comfort and value for their homes our designers and technicians create collections that are modern, accessible and crafted to bring the utmost pleasure. And because your tastes are unique, we commit to bold concepts that bring the ultimate in sophistication to your floorcovering.

We are also acutely aware of the need to act for the good of the environment and to play our part in the common challenge to take care of our beloved planet. We place the environment front and centre of our dedication to creating beautiful floorcoverings, so you can enjoy your home decoration knowing you've also made a commitment to a better future.

At Louis De Poortere you will find rugs, carpets and stair runners, which you can freely mix and match to make your decorating Home Sweet Home experience a pleasure. Our passion is to offer you this pleasure.

# Our philosophy



## Collection 2024

Our Collection 2024 embodies the balance between exquisite textures and sublime colours, transporting you to a world where beauty of details and materials are combined with a palette of soft, natural colours.

In this collection, we emphasise texture: every detail is carefully thought out to create unique visual effects. Disordered weaves disturb the surface for a striking relief that's sure to captivate. From flamed to loop pile yarns, each element is carefully considered to bring meaning and life to our creations.

Our rugs are works of art and have been designed with the same quest for perfection. They have been worked on as both images and materials to create a harmony between aesthetics and touch. Each style tells a story, a sensory journey where patterns and textures blend to create a unique experience.

As for colours, we opt for natural shades and dyes to bring an unmistakable quality. Colourful and soft, they echo the vivid beauty of nature and bring a touch of serenity to your home.

## A bold new generation of material

We're committed to protecting the environment for future generations and so we've taken the step to craft a collection that's more sustainable and which sets us on a path to circularity. With Ecorugs, our Rug Collection 2024 moves to a mono-material polyester construction.

The move lets us guarantee that our rugs are not only high quality, but also fully recyclable. It's a bold new generation of environment-friendly rugs that will help to preserve our planet while upholding our philosophy of creating beautiful rugs that bring the utmost pleasure.

# Why use polyester?

Historically, we have used natural cotton within our rugs, but with the challenge to protect the natural world and provide a bright future for civilization, we believe it is important to make sure our products are more circular. Polyester gives us this opportunity through its long life and an ability to be returned to new rugs.

100%

## Mono-material

Every part of our Ecorugs is made from polyester. By creating a 100% mono-material construction, we eliminate the need to separate materials and make it easier to recycle Ecorugs at the end of their life.



## Longer product life

In terms of durability, polyester fibres are stronger and more durable than cotton. In fact, we compared the wear of new Ecorugs with a cotton construction and found that cotton wears out three times more under the same usage. The use of 100% polyester means a longer life for our rugs and less frequent replacement.



## Recyclability

Polyester is endlessly recyclable without degradation in quality, giving us the potential to adopt a circular product model in the future. Recycling polyester lets us extend the life of the materials we use, reducing demand for new raw materials.

## Sustainability with style

When it comes to beautiful products to decorate your home, we know you desire exceptional quality and a uniquely personal style. We also know that the future of the planet is a worry for us all. Our rugs consider both, bringing you an eco-friendly alternative that moves towards circularity and which doesn't compromise style. You can enjoy the beauty of your Ecorug knowing you're choosing a better future.

100% PET  
100% RECYCLABLE  
100% RESPONSIBLE

## A fibre of the future.

As a synthetic material, it can be recycled efficiently and infinitely, without compromising its quality throughout its life cycle.

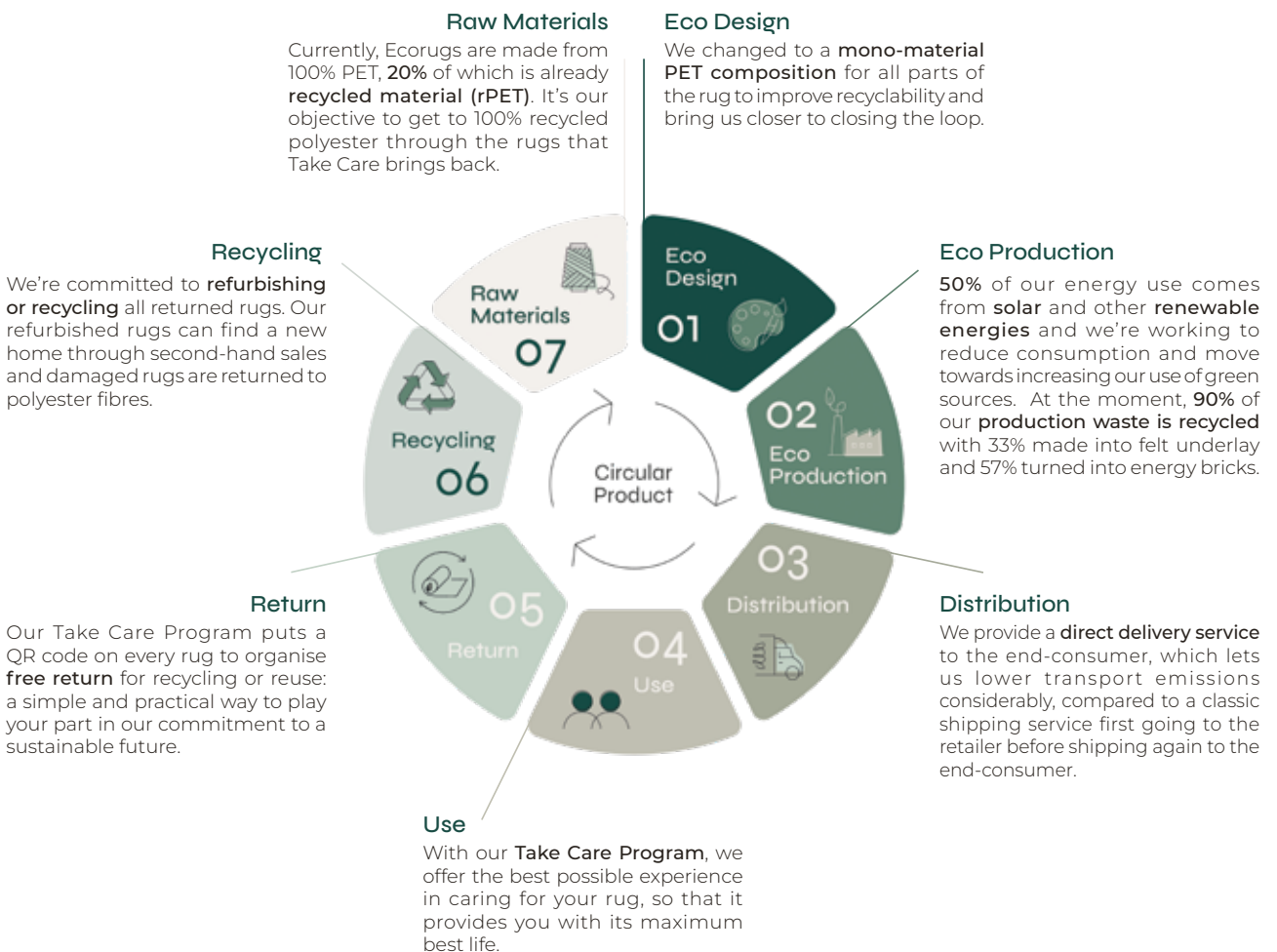
We're aware of the concerns associated with the production of virgin polyester derived from petroleum, a non-renewable resource. However, alongside our Take Care Program to make recycling a shared responsibility, our Ecorugs offer a move towards a sustainable solution by extending polyester's useful life and reducing our demand on these resources.

Polyester has exceptional recycling properties and for every kilogram of polyester we recycle, we get one kilogram back. This means no waste and every gram of material is used efficiently. Also, with polyester's exceptional durability, each rug possesses a long life, no matter how many times it finds a new home. Polyester is truly a fibre of the future.



# A life more circular

We believe that closing the loop with our mono-material construction, gives us the best opportunity to lower our footprint, and this is how we create a more circular life for your Louis de Poortere Ecorug:







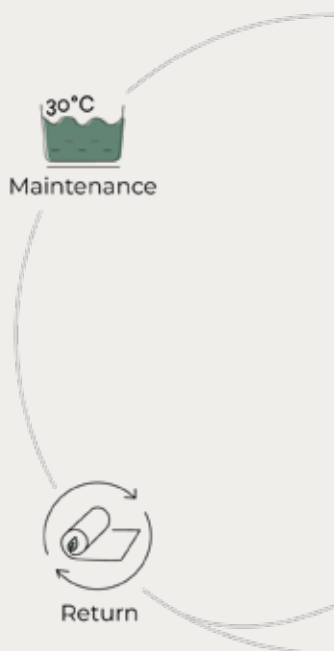
# Take Care Program

Take Care is our way to make sure that we share responsibility in extending the life of your Ecorug and reclaiming it for recycling. Making returns easy through Take Care is what's needed to make the recycling of Ecorugs a possibility: It's easy for you and puts us in control of the process.

Through Take Care, we can both share a role in giving Ecorugs a circular life.

## 01. Maintenance

Keeping your Ecorug looking new is one of the best ways to give it a long life. That's why we've made every Ecorug machine washable and set out the perfect way to care for your new rug in our Take Care guidance.



## 02. Return

Once your Ecorug has reached the end of its time with you, it's easy to return it. Use the QR code and serial number to arrange a free\* return. It's a simple way to contribute to a more sustainable future.

## 03. Reuse or Recycle

Once your Ecorug finds its way back to us, we assess it and decide what to do. Rugs in good condition are cleaned, reconditioned and are put up for second-hand sale. Those not able to be sold are sent to our recycling network to be returned to raw polyester material.

\*Only free return available for EU countries at this moment (UK incl). For updates, please check the website.

# Index

---

<b>CRAFT COLLECTION</b>	<b>12</b>
Papercut	
Lucia	
Cobblestone	
Kuba	
Chess	
<b>CITIES COLLECTION</b>	<b>56</b>
Amsterdam	
London	
New York	
Paris	
Tokyo	
<b>SAKURA COLLECTION</b>	<b>70</b>
Sakura	
<b>POP COLLECTION</b>	<b>80</b>
Tiger	
Lobster	
Koi	
Memento Mori	
Banana	
<b>GALLERY COLLECTION</b>	<b>94</b>
Shape	
Fresque	
Himalaya	
<b>MEDITATION COLLECTION</b>	<b>124</b>
Lagoon	
Swim	
<b>FADING WORLD COLLECTION</b>	<b>152</b>
Kirman	
<b>TAPESTRY</b>	<b>166</b>
Cites   Pop   Gallery Collections	

<b>STRUCTURES &amp; MEDITATION COLLECTIONS</b>	<b>176</b>
Baobab	
Coral	
<b>MAD MEN COLLECTION</b>	<b>178</b>
Griff	
Jacob's Ladder	
Cracks	
Dedalo	
<b>GALLERY</b>	<b>181</b>
Dora	
Graffito	
<b>NUANCE &amp; FADING WORLD COLLECTIONS</b>	<b>182</b>
Module	
Medallion	
<b>ANTIQUARIAN &amp; ATLANTIC COLLECTION</b>	<b>184</b>
Bakhtiari	
Hadschlu	
Heriz	
Kilim	
Ushak	
Monetti	
Streaks	
Venetian Dust	
<b>Technical specifications &amp; Availbale sizes</b>	<b>186</b>
<b>Overview</b>	<b>188</b>
<b>Other collections</b>	<b>192</b>

---



# CRAFT COLLECTION

---

NEW



9358 CAMPANULA



# PAPERCUT

## CRAFT COLLECTION

*Don't miss our new Papercut rug, a piece that embodies the modern, deconstructivist aesthetic of the Bauhaus movement. Inspired by the tangram, this rug features printed, cut and deconstructed shapes, which are then skilfully reconstructed.*

*The Papercut rug is perfectly in keeping with the heritage of the Bauhaus movement, which advocated the fusion of art and craft, and the search for balance between form, colour and functionality. It will bring a touch of the avant-garde and originality to your interior, while reflecting boldness and creativity.*

9358 CAMPANULA







9361 SEA SPRAY



9364 RUST





9366 STRING

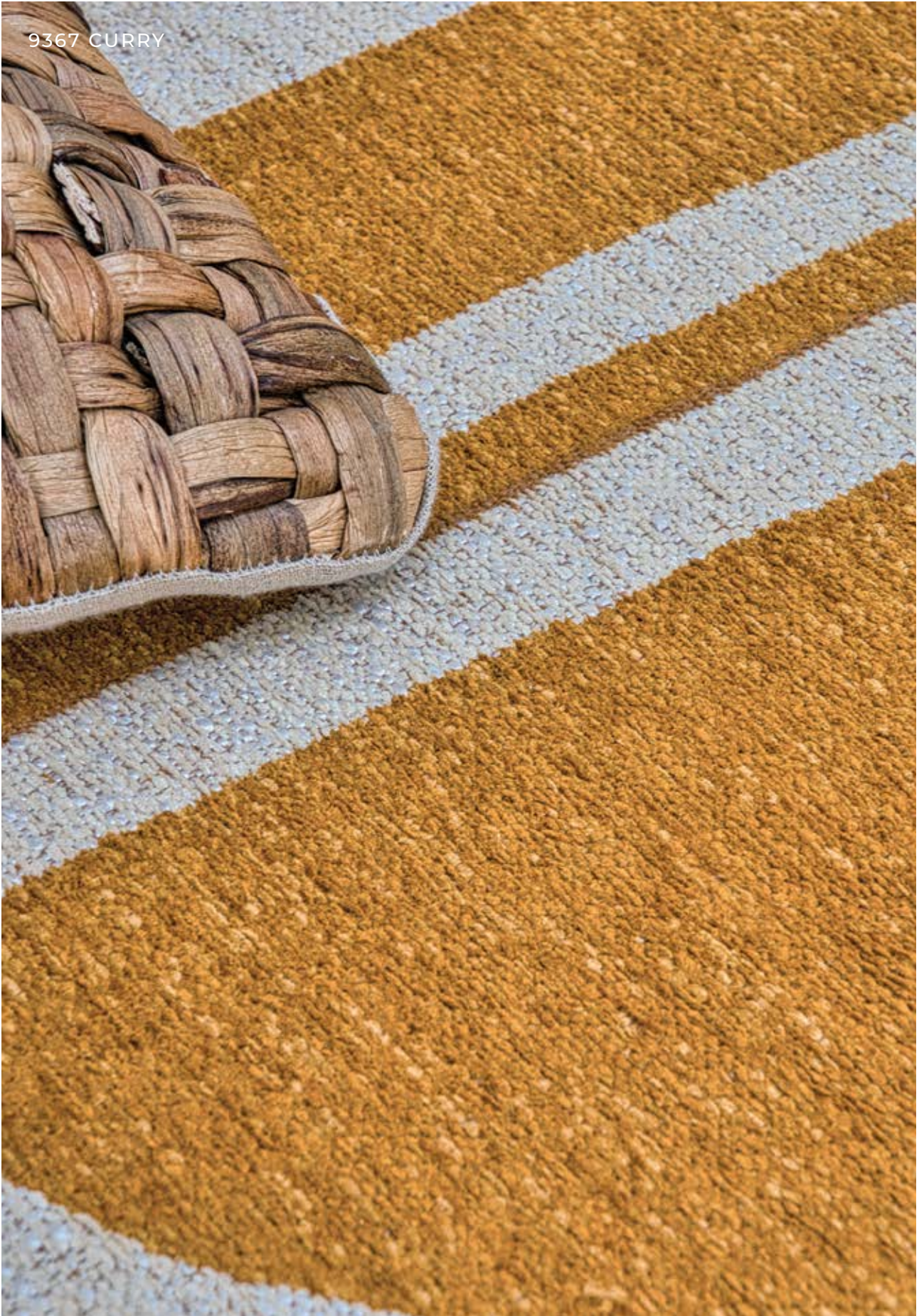


9367 CURRY





9367 CURRY





# PAPERCUT

## CRAFT COLLECTION



**9358**  
CAMPANULA



**9361**  
SEA SPRAY



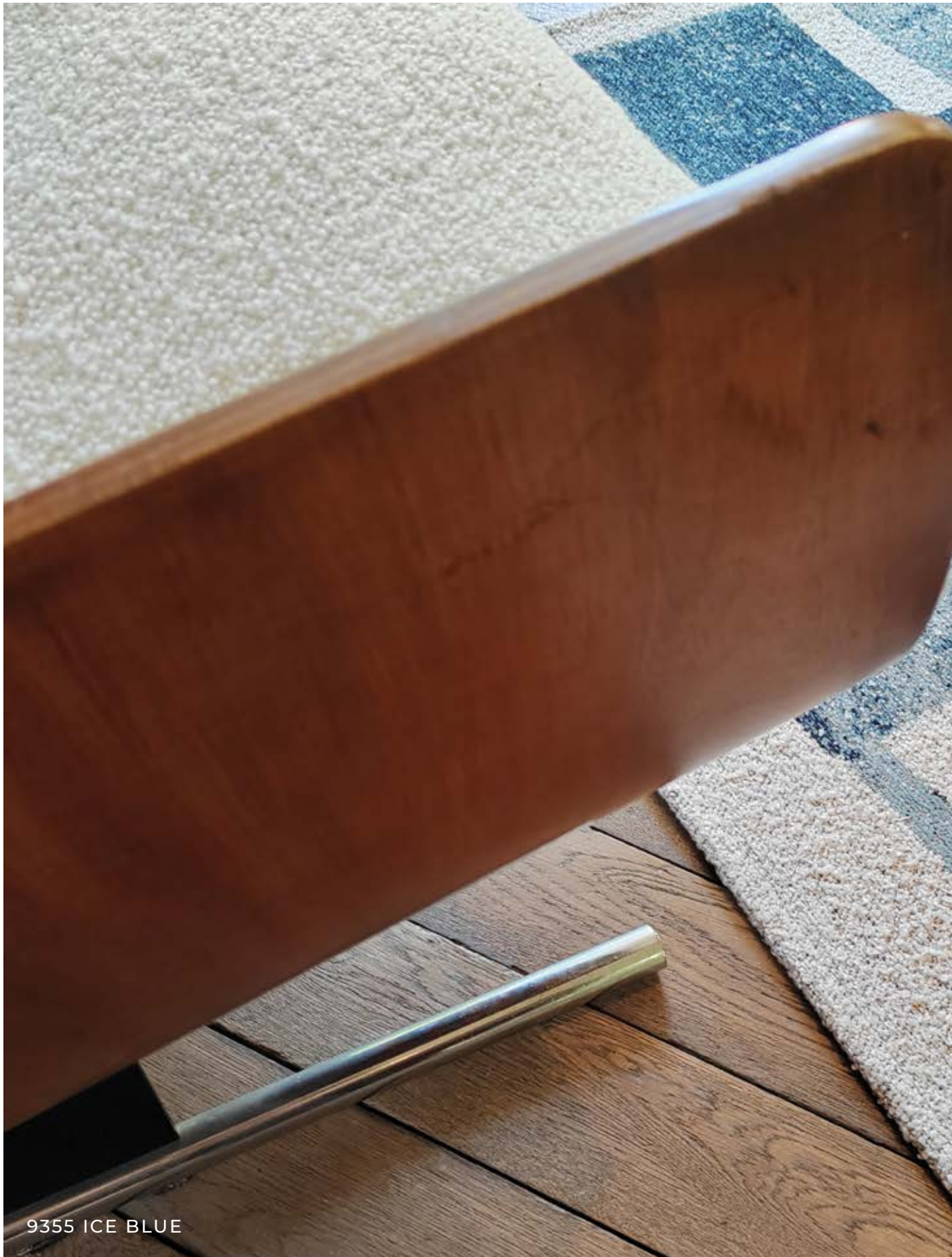
**9364**  
RUST



**9366**  
STRING



**9367**  
CURRY



9355 ICE BLUE



# LUCIA

## CRAFT COLLECTION

*Let yourself be dazzled by our brand new Lucia design, a rug that skillfully combines retro 50s elements with a trendy, contemporary aesthetic. This rug stands out for its bouclette effect, offering a soft, fluffy texture that's very much in vogue.*

*The design concept revolves around the play of cubes and the search for balance, reminiscent of a carefully stacked house of cards. The geometric shapes are reminiscent of cubism, creating a dynamic, artistic aesthetic. The play of transparency adds a touch of depth and mystery to the whole.*

9355 ICE BLUE



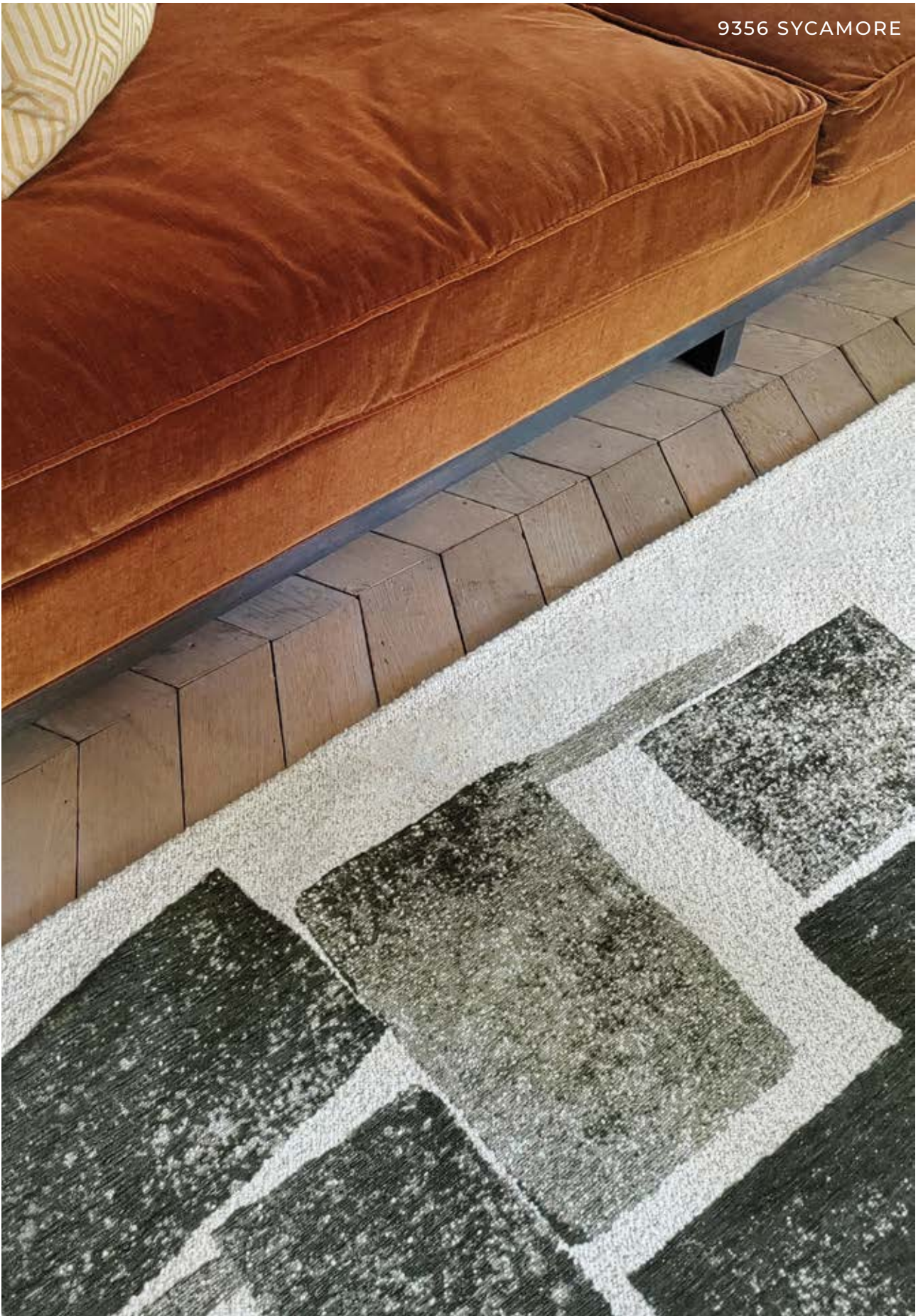


9356 SYCAMORE





9356 SYCAMORE



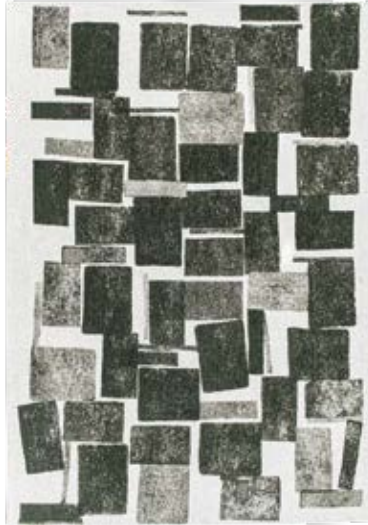


# LUCIA

## CRAFT COLLECTION



**9355**  
ICE BLUE



**9356**  
SYCAMORE



**9357**  
NUGGETS

9346 PEACH PARTY





# COBBLESTONE

## CRAFT COLLECTION

*The Cobblestone rug will captivate you with its abstract shapes and artistic details.*

*The design concept is based on in-depth graphic research, using stamps and block print techniques to create unique patterns. Gradients of color and varying degrees of print add depth and texture to the rug, while a subtle line links the whole together, creating visual connections that add an extra dimension to the whole.*



9346 PEACH PARTY

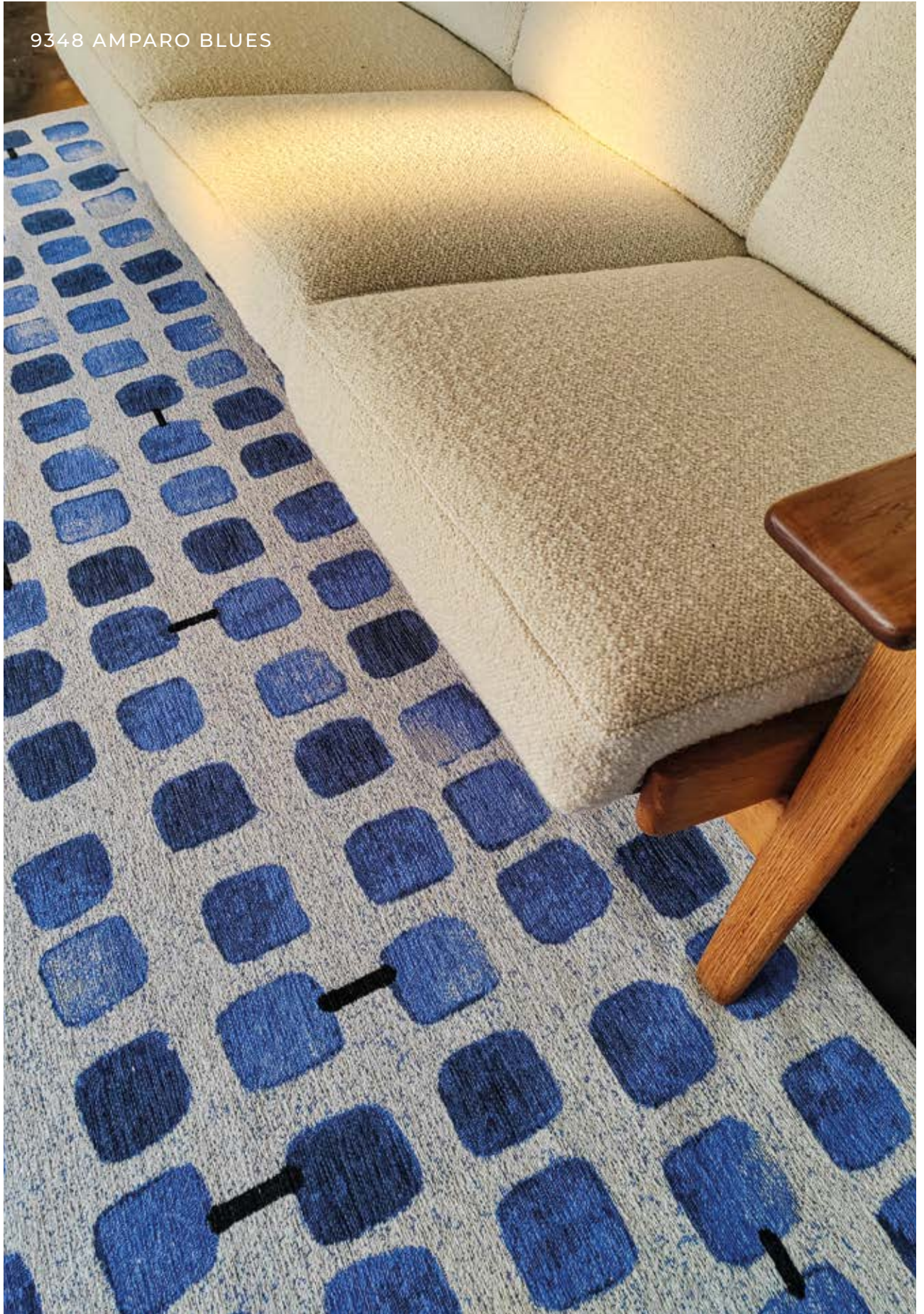






9348 AMPARO BLUES

9348 AMPARO BLUES





# COBBLESTONE

## CRAFT COLLECTION



9346

PEACH PARTY



9348

AMPARO BLUES

9335 BISON





# KUBA

## CRAFT COLLECTION

*Kuba rugs draw their inspiration from Zairean Kuba art, famous for its abstract motifs and rich creativity. Kuba men and women, renowned for their exceptional weaving and embroidery skills, developed increasingly abstract designs as the kingdom grew in prosperity and power.*

*The design concept is inspired by African fabrics, but revisits them with a modern approach and a sense of added perspective. The traditional ethnic pattern is metamorphosed into two layers, creating a captivating visual depth that further enhances the effect of perspective.*

9336 ULTRAMARINE





9335 BISON



# KUBA

## CRAFT COLLECTION



**9335**

BISON



**9336**

ULTRAMARINE

9338 HONEY







# CHESS

## CRAFT COLLECTION

*The Chess rug is a deconstructed interpretation of the iconic checkerboard pattern. With a bold graphic aesthetic, this rug strikes the perfect balance between the disorder of the pattern and the harmony of the colors.*

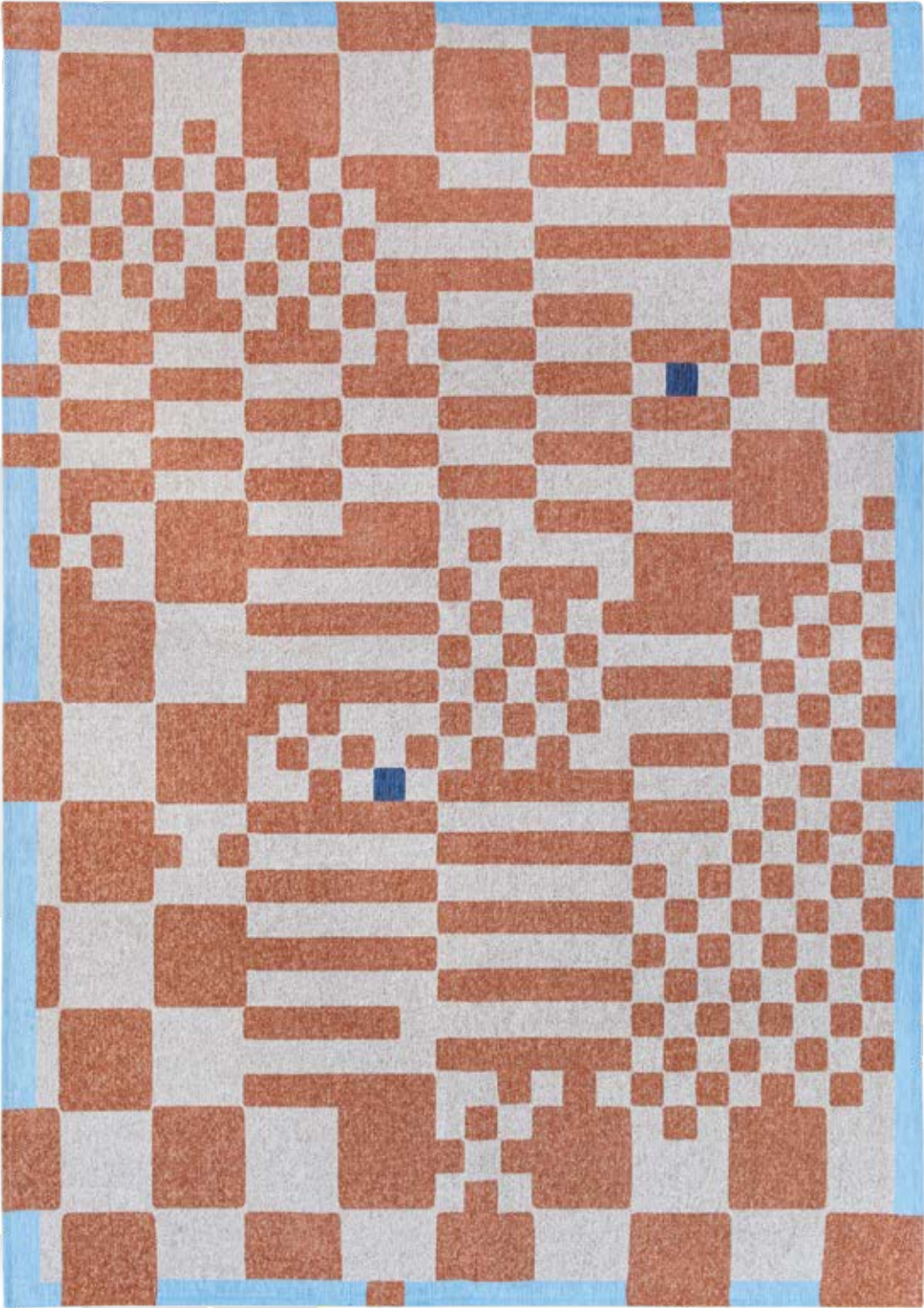
*The checkerboard is unstructured, creating an intriguing aesthetic that draws the eye. What's more, subtle material effects are integrated into the checkerboard, adding a tactile dimension and a sense of depth to the whole.*

*The brightly colored contours are pure and defined, giving visual clarity to the pattern while adding a striking energy to the design.*



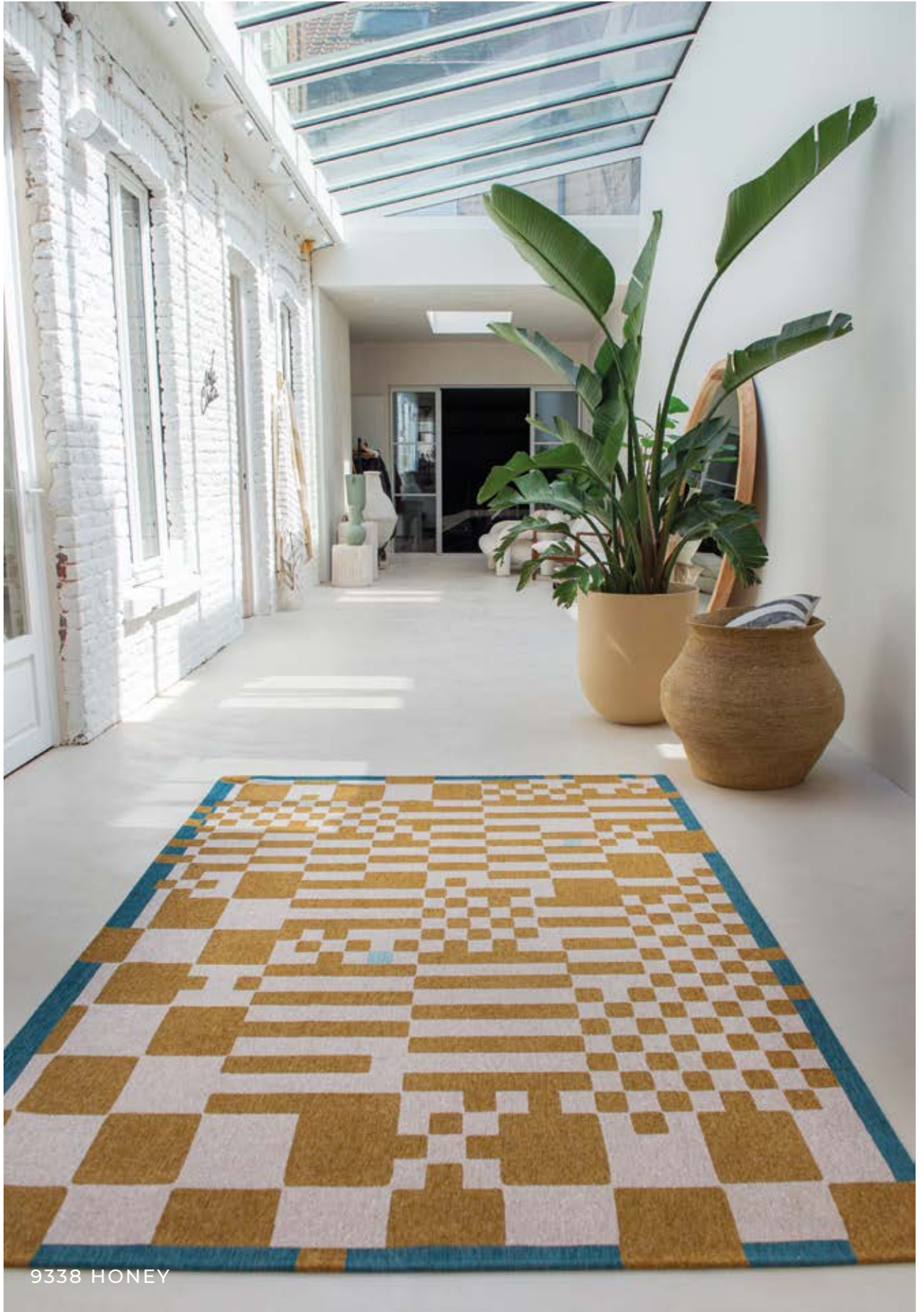
9339 DEEP GREEN





9341 NUDE

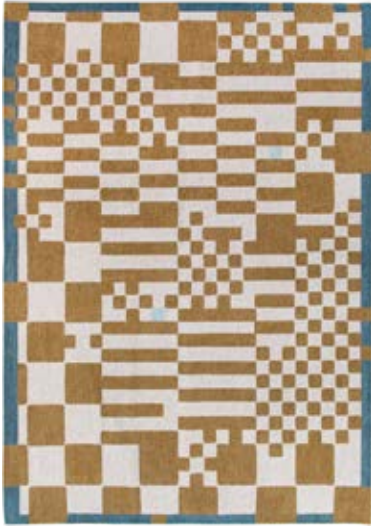




9338 HONEY

# CHESS

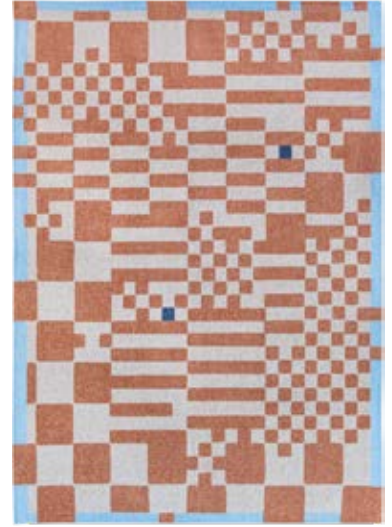
## CRAFT COLLECTION



9338  
HONEY



9339  
DEEP GREEN



9341  
NUDE





# CITIES COLLECTION

---

NEW



9320 LONDON | GREEN MEADOWNS



# CITIES

## COLLECTION

*Inspired by aerial views, this unique design combines a mysterious aesthetic with transparency, evoking the spellbinding atmosphere of old maps.*

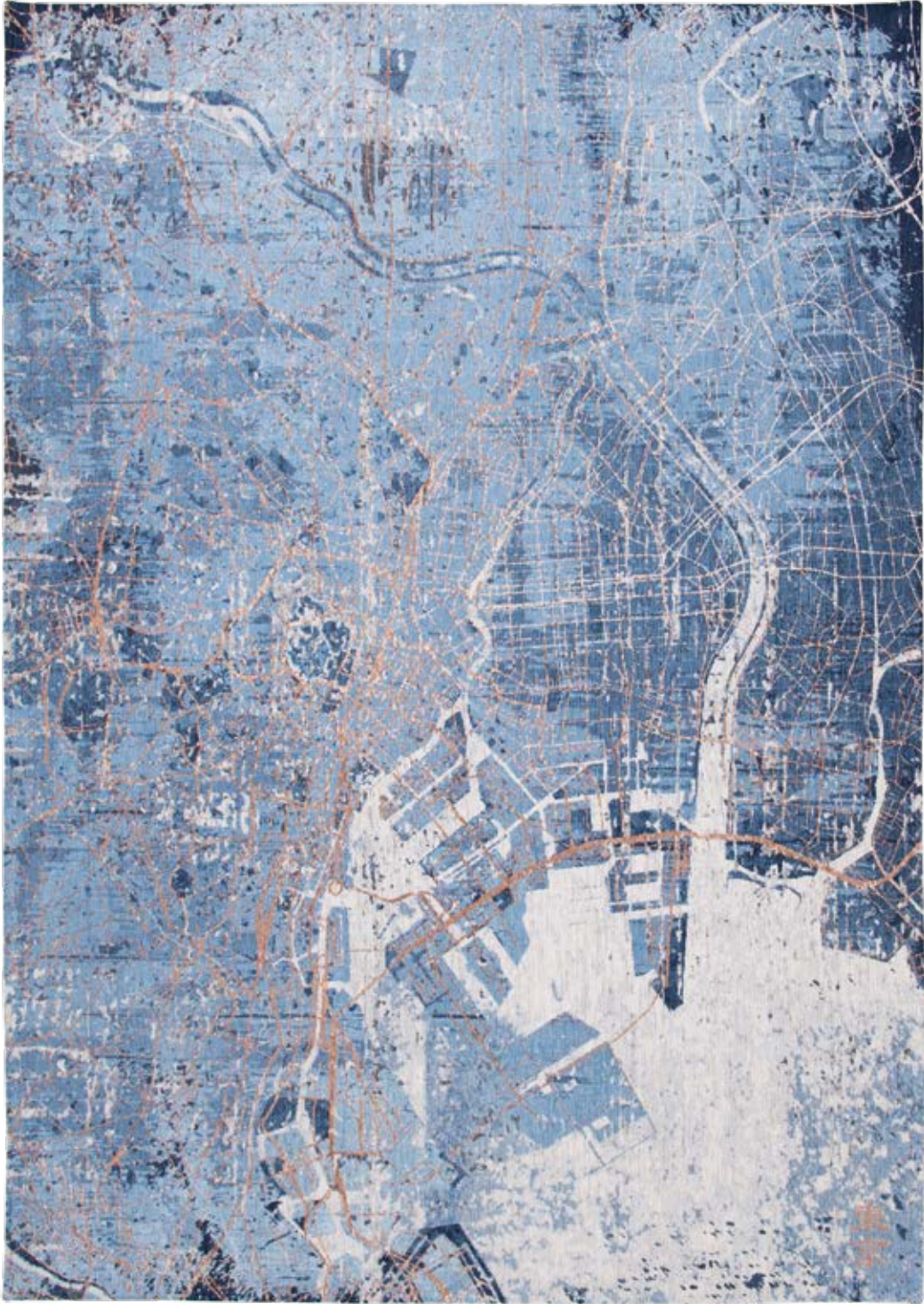
*Cities stands out for its graphic character, going beyond the simple informative aspect to offer an arty visual experience.*

*Each city has been carefully selected to represent a distinct style and atmosphere, creating a unique link with the city in question.*





9315 NEW YORK | GATSBY GOLD



9314 TOKYO | CONDUCTIVE BLUE





9322 PARIS | SPACE TRIP









9323 AMSTERDAM | ORANGE CUT

9320 LONDON | GREEN MEADOWS



# CITIES

## COLLECTION



9314

TOKYO | CONDUCTIVE BLUE



9315

NEW YORK | GATSBY GOLD



9320

LONDON | GREEN MEADOWS



9322

PARIS | SPACE TRIP



9323

AMSTERDAM | ORANGE CUT



# SAKURA COLLECTION

---

NEW



9371 COPPER PINK





# SAKURA

## COLLECTION

*Discover the world of the Sakura rug, celebrating the timeless beauty of Japanese cherry trees. Inspired by these emblematic symbols, this rug embodies both elegance and fashion.*

*The design focuses on the representation of cherry blossom trees, creating a delicate and poetic atmosphere. The floral motifs evoke the spring season and capture the ephemeral beauty of sakura petals in full bloom.*





9373 MORNING MIST





9372 WET GARDEN

9371 COPPER PINK



# SAKURA

## COLLECTION



**9371**  
COPPER PINK



**9372**  
WET GARDEN



**9373**  
MORNING MIST





POP  
COLLECTION

---

NEW

9388 TIGER | GREEN ON FIRE





# POP

## COLLECTION

*A series of quirky, figurative pieces that will add a dose of originality to your home.*

*Each rug in this collection features unique and iconic motifs.*

*This collection is a real statement of style and an invitation to get off the beaten track. These pieces are sure to catch the eye and spark lively conversations.*



9388 TIGER | GREEN ON FIRE

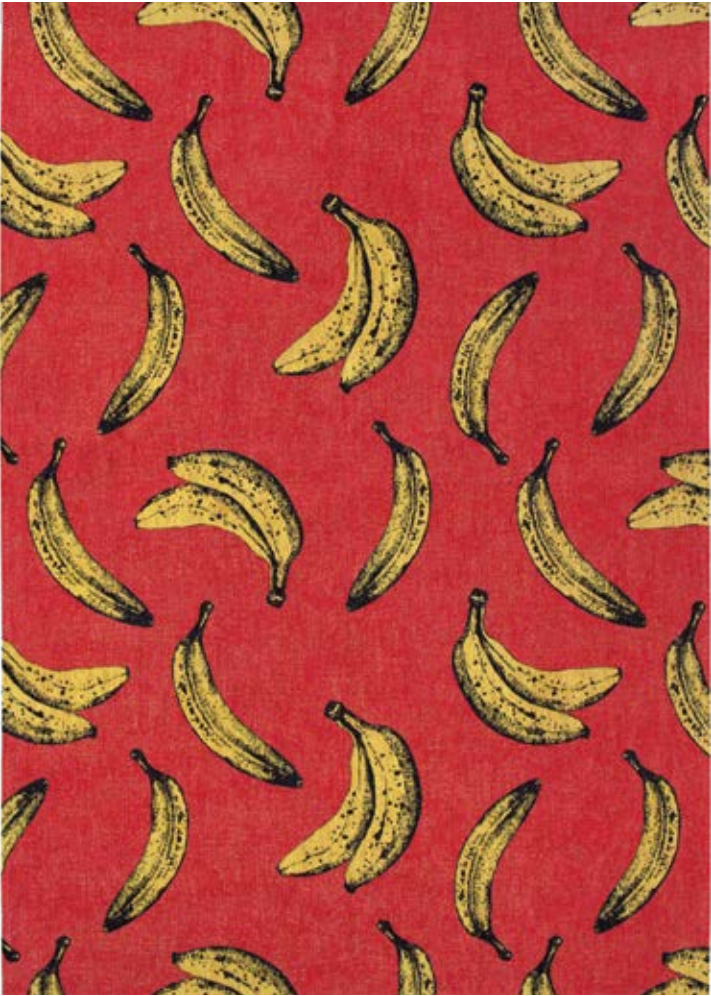


9390 KOI | JAPANESE POND





9389 LOBSTER | STEAM RED



9392 BANANA | MIAMI RED









9394 BANANA | CALIFORNIA BLUE





9391 MEMENTO MORI | FUNY BONES

# POP

## COLLECTION



9388

TIGER | GREEN ON FIRE



9389

LOBSTER | STEAM RED



9390

KOI | JAPANESE POND



9391

MEMENTO MORI | FUNNY BONES



9392

BANANA | MIAMI RED



9394

BANANA | CALIFORNIA BLUE



# GALLERY COLLECTION

---



9368 CARPE DIEM





# SHAPES

## GALLERY COLLECTION

*Let yourself be seduced by the Shapes design, with its abstract interlocking forms.*

*To add depth and visual interest, material effects are incorporated into the rug. These textured effects give a tactile feel and create subtle plays of light that highlight the abstract shapes.*

*The colors used are carefully selected to create visual crossovers. When these colors meet, they blend together to create new hues and bring an extra visual dynamic to the whole.*



9369 DUCK SONG







9370 SECRET



9368 CARPE DIEM

# SHAPES

## GALLERY COLLECTION



**9368**  
CARPE DIEM



**9369**  
DUCK SONG



**9370**  
SECRET

9393 INDIAN RICE







# FRESQUE

## GALLERY COLLECTION

*Let yourself be surprised by the Fresque rug. The bright but natural colors and visible brushstrokes give this rug an artistic and expressive look that leaves plenty of room for imagination.*

*The design concept is inspired by a children's painting workshop, where spontaneity and free expression have pride of place. The rug appears to be part of a fresco, capturing the energy and movement of a creative gesture.*

*The colors used are vibrant and joyful, bringing a touch of gaiety and dynamism to your space.*



9393 INDIAN RICE







9342 PURPLE GAME



9344 MIDDLE OF





9344 MIDDLE OF



# FRESQUE

## GALLERY COLLECTION



**9342**

PURPLE GAME



**9344**

MIDDLE OF



**9393**

INDIAN RICE

9379 SPRING



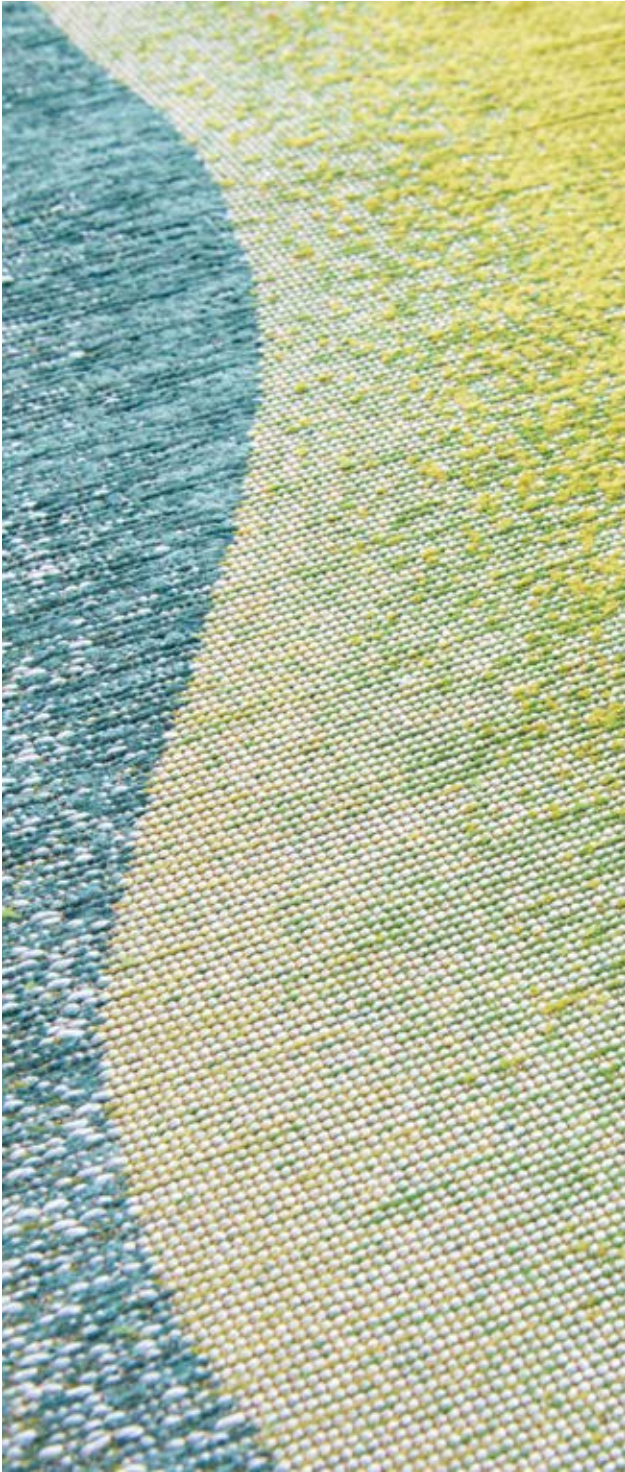


# HIMALAYA

## GALLERY COLLECTION

*Let yourself be transported to the majestic peaks and enchanting landscapes of the Himalayas with this unique collection, where colors and patterns combine to create a rejuvenating and inspiring atmosphere. This collection captures the beauty of mountains, clouds and sunsets, evoking the four seasons of the year.*

9379 SPRING







9382 WINTER





9381 AUTUMN







9380 SUMMER

# HIMALAYA

## GALLERY COLLECTION



**9379**  
SPRING



**9380**  
SUMMER



**9381**  
AUTUMN



**9382**  
WINTER



# MEDITATION COLLECTION

---





# LAGOON

## MEDITATION COLLECTION

*The Lagoon design concept is based on ink blots and Rorschach tests, offering a multitude of interpretations. The design evokes the sea, earth and moss, establishing a close link with nature.*

*The colors blend harmoniously into each other, creating a spontaneous and captivating design.*

*The color palette is made up of rich, evocative shades. From warm brown to teal, refined gold to vibrant green, and touches of iodine, cognac and deep black, each tone helps to create a natural, authentic ambience.*







9332 INKJET





9326 CHESTNUT



9331 PALM GREEN





9328 IODE





9333 SUNSET







9331 PALM GREEN

# LAGOON

## MEDITATION COLLECTION



**9326**  
CHESTNUT



**9328**  
IODE



**9331**  
PALM GREEN



**9332**  
INKJET



**9333**  
SUNSET



9351 SURF



# SWIM

## MEDITATION COLLECTION

*Immerse yourself in the world of our Swim rug, inspired by the beauty and fluidity of water. The design concept is based around the cyanotype technique, creating a captivating visual effect.*

*This rug highlights the interplay of reflections, capturing the magic and brilliance of water. The patterns and shades of color reflect current trends, adding a modern, elegant touch to your interior.*

*The use of materials is also highlighted in this rug design. The white flamed yarn is adding relief and texture to the whole. This technique adds an extra dimension to the rug, creating a pleasant tactile experience and enhancing its visual appeal.*



9351 SURF





9349 SAFFRON





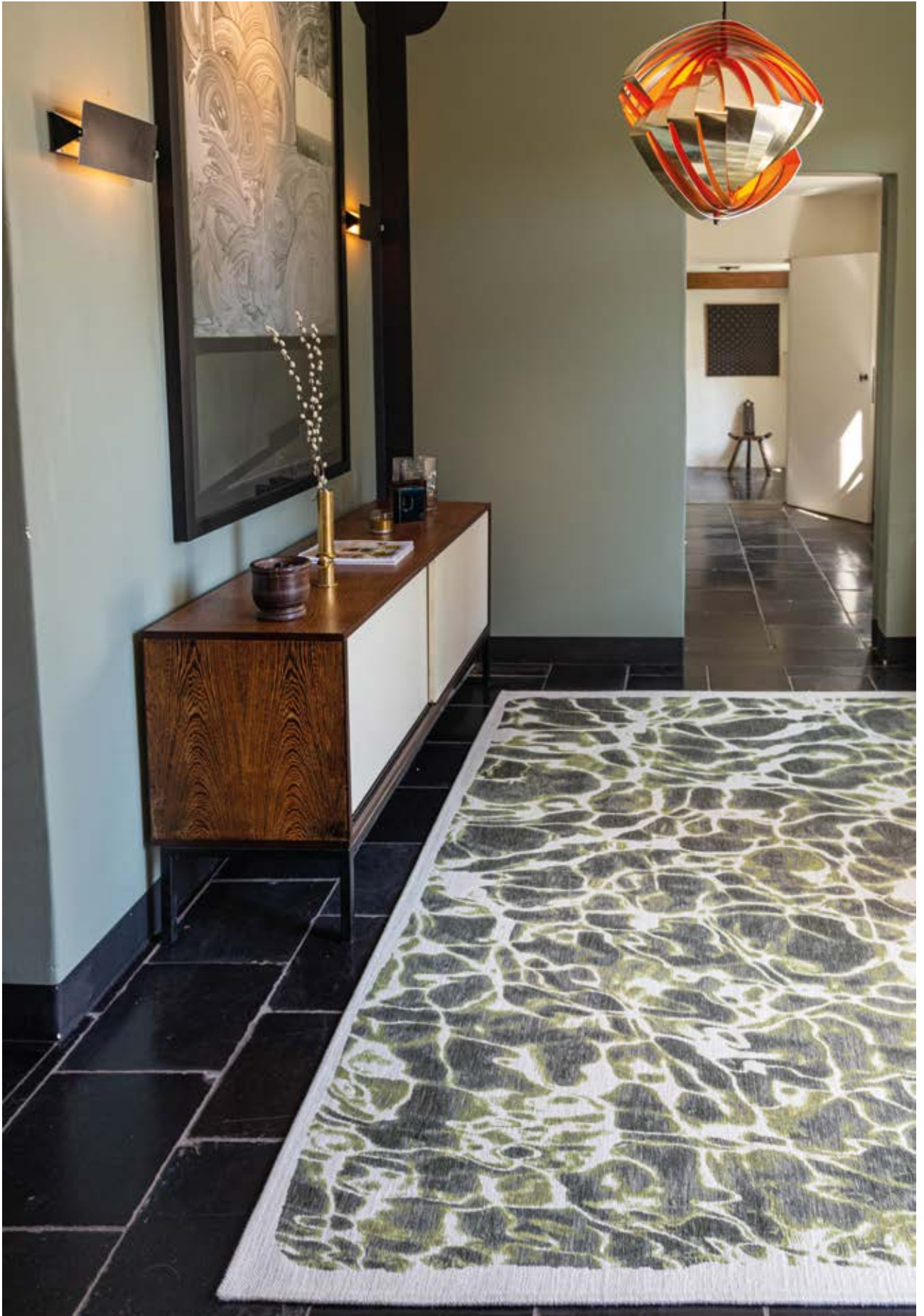


9353 GRIT





9354 RIVER





9353 GRIT

# SWIM

## MEDITATION COLLECTION



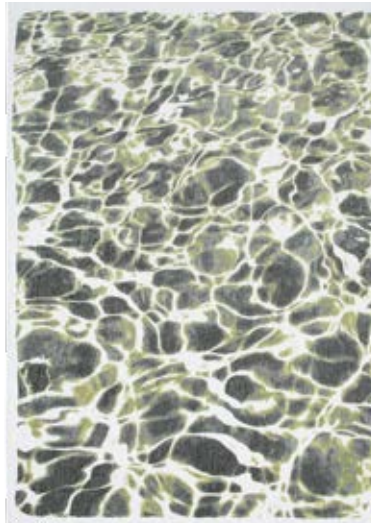
**9349**  
SAFFRON



**9351**  
SURF



**9353**  
GRIT



**9354**  
RIVER





**FADING  
WORLD  
COLLECTION**

---



9374 STORM



# KIRMAN

## FADING WORLD COLLECTION

*The Kirman rug is a harmonious blend of past and present, of classic deconstruction and contemporary artistic expression. Inspired by an old design by Louis de Poortere, this rug adds a worn and nostalgic touch.*

*The motif is stylised using a flamed yarn, which structures the design and gives it a textured, subtly evanescent appearance, like a memory that is slowly fading. This unique technique gives the rug a captivating, artistic aesthetic.*

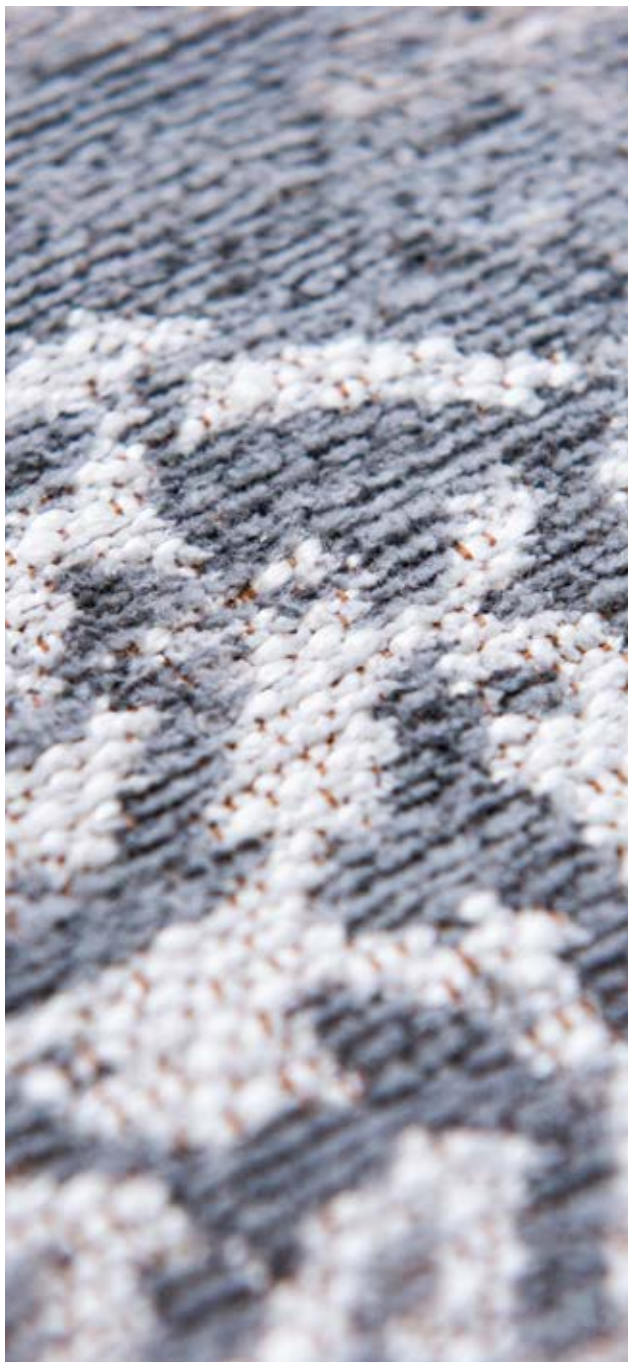


9377 SUNWAX





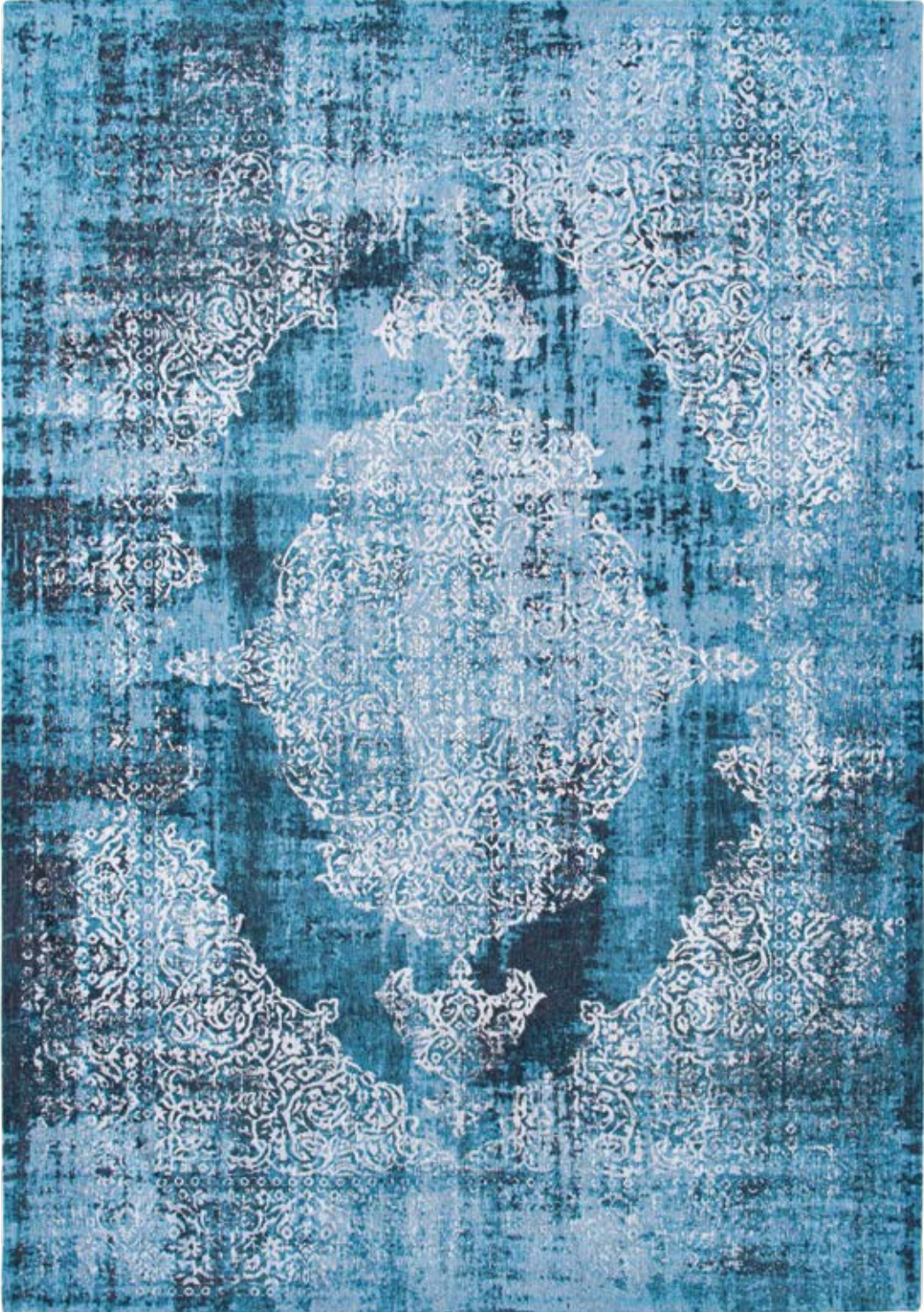
9376 QUARTZ





9374 STORM







9378 MARGAUX





9375 TUSCANY

# KIRMAN

## FADING WORLD COLLECTION



**9374**  
STORM



**9375**  
TUSCANY



**9376**  
QUARTZ



**9377**  
SUNWAX



**9378**  
MARGAUX

# TAPESTRY

---

ALL OUR GALLERY, POP AND CITIES  
COLLECTION RUGS ARE AVAILABLE AS A  
TAPESTRY IN SIZE 100 X 140CM.

THE INSTALLATION KIT OF THE TAPESTRY IS  
VERY EASY !  
FOLLOW THE GUIDE ADDED IN EACH RUG.



9389 LOBSTER | STEAM RED



9323 AMSTERDAM | ORANGE CUT





9315 NEW YORK | GATSBY GOLD



9144 STREET GRAPH



9143 DORADO



9368 CARPE DIEM



9393 INDIAN RICE

COLLECTION  
RUGS 2022

---



BAOBAB  
9201 MADAGASCAR GOLD

BAOBAB  
9200 BLACK WATER



BAOBAB  
9198 TSINGY OYSTER



BAOBAB  
9197 DRY BEIGE



CORAL  
9228 OYSTER WHITE



CORAL  
9229 SHELL BEIGE



CORAL  
9227 BLACK GOLD

GRIFF  
8420 JERSEY STONE



GRIFF  
8421 BRONX AZURITE



CRACKS  
8629 ABYSS BLUE

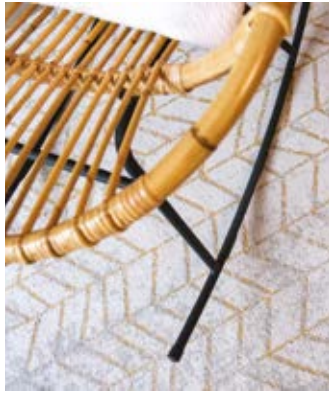


CRACKS  
8723 DARK PINE



GRIF  
8956 COPPERFIELD

MAD MEN COLLECTION - LOUIS DE POORTERE ECORUGS COLLECTION



JACOB'S LADDER  
8928 CENTRAL YELLOW

DEDALO  
9203 BLUE MARINE



JACOB'S LADDER  
8422 BROADWAY GLITTER



DEDALO  
9204 REPUBLIC GREEN

DEDALO  
9205 YELLOW SCARAB





DORA  
9143 DORADO



GRAFFITO  
9144 STREET GRAPH



MODULE  
9196 CAMEL BLUE

MODULE  
9209 PINK ROHE





MEDALLION  
8259 JADE OYSTER

MEDALLION  
8263 MINERAL BLACK



MEDALLION  
8383 SALT & PEPPER

MEDALLION  
9148 STONE

KILIM  
9115 FEZ RED



HERIZ  
8704 AMIR GOLD



HADSCHLU  
8719 782 RED



BAKHTIARI  
8712 JANISSARY MULTI



USHAK  
8894 TURKISH DELIGHT



STREAKS  
8716 CONEY GREY





MONETTI  
9116 HISBISCUS RED



VENETIAN DUST  
9195 PADUA BEIGE

# TECHNICAL SPECIFICATIONS

Design	Baobab, Coral	Lucia	All other designs
Composition	100% PET (20%rPET)		
Manufacturing process	Jacquard Flatweave		
Backing composition	PES anti-slip latex		
Height	+/- 5mm 0,20"	+/- 5mm 0,20"	+/- 3mm 0,12"
Weight	1650 gr/m <sup>2</sup> 49 OZ/SQY	1500 gr/m <sup>2</sup> 44 OZ/SQY	1500 gr/m <sup>2</sup> 44 OZ/SQY
Fire resistance	flammability according to BS 4790 CFR 1630-FF1-70	flame resistance according to CAN CGSB 4.2 - 27.6	
Chemical content	determination of formaldehyde according to ISO 14184-1	prohibit azo dyes free according to EN 14362-1	
Other test	thermal resistance (R) Tog BS 4745 between 0.32 and 0.41 m <sup>2</sup> k/W		
Certifications	 <p><b>STANDARD 100</b> 1611062 Centexbel <a href="http://www.oeko-tex.com">www.oeko-tex.com</a></p>	 <p><b>CIRCULAR</b> hotel-interior</p>	

To get your maintenance advice, visit our website  
[www.louisdepoortere.com](http://www.louisdepoortere.com)

## AVAILABLE SIZES

sizes (cm)	80x150 31"x59"	100x140 3'3"x4'7"	80x250 31"x8'2"	Ø140 Ø4'7"	140x200 4'7"x6'7"	170x240 5'7"x7'10"	200x280 6'7"x9'2"	Ø240 Ø7'1"	240x340 7'10"x11'2"	280x390 9'2"x12'10"
Baobab Cobblestone Coral Dedalo Jacob's Ladder Kuba Module Papercut Streaks Swim	X		X	X	X	X	X	X	X	X
Cracks Griff Lagoon Lucia Sakura	X			X	X	X	X	X	X	X
Bakhitari Chess Hadschlu Heriz Kilim Kirman Medallion Monetti Venetian Dust Ushak	X NOT ANTIQ.				X	X	X		X	X
Cities Collection Gallery Collection Pop collection		X			X NOT DORA	X	X	X	X NOT DORA	X NOT DORA

**CRAFT COLLECTION**

---

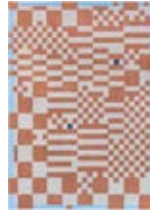
**CHESS**



9338



9339

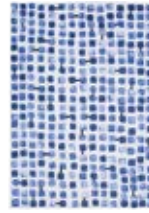


9341

**COBBLESTONE**



9346



9348

**LUCIA**



9355



9356



9357

**KUBA**



9335



9336

**PAPERCUT**



9358



9361



9364



9366



9367

**CITIES COLLECTION**

---



9314



9315



9320



9322



9323

**SAKURA COLLECTION**

---



9371



9372



9373

**POP COLLECTION**

---



9388



9389



9390



9391



9392



9394

## GALLERY COLLECTION

---

DORA



9143

GRAFFITO



9348

HIMALAYA



9379



9380



9381



9382

FRESQUE



9342



9344



9393

SHAPES



9368



9369



9370

## FADING WORLD COLLECTION

---

MEDALLION



8254



8255



8257



8258



8259



8260



8261



8263



8383



9145



9146



9148



9065



9067

KIRMAN



9374



9375



9376



9377



9378

# OVERVIEW - LOUIS DE POORTERE ECORUGS COLLECTION

## MEDITATION COLLECTION

---

### CORAL



9226



9227



9228



9229

### LAGOON



9326



9328



9331



9332



9333

### SWIM



9349



9351



9353



9354

## ANTIQUARIAN COLLECTION

---

### BAKHTIARI



8712



9127

### HADSCHLU



8719



8720

### USHAK



8884



8894

### HERIZ



8703



8704



8705

### KILIM



9110



9113



9114



9115

## NUANCE COLLECTION

---

### MODULE



9196



9206



9209

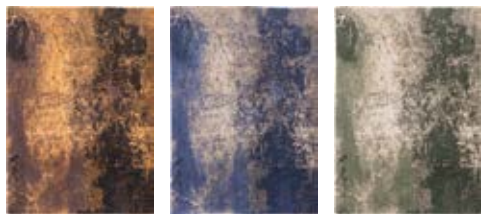


9210

## MAD MEN COLLECTION

---

### CRACKS

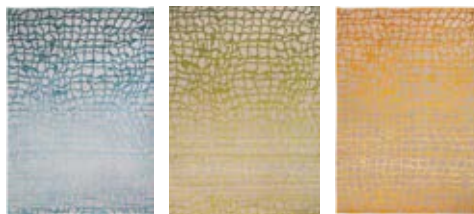


8618

8629

8723

### DEDALO



9203

9204

9205

### GRIFF



8419

8420

8421

8550

### JACOB'S LADDER



8422

8425



8785

8926

8925

8956



8928

8929

## ATLANTIC COLLECTION

---

### MONETTI

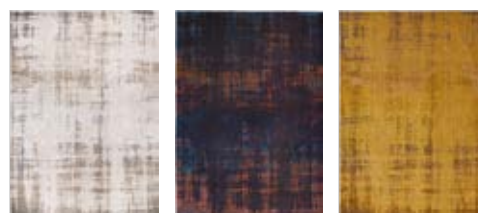


9116

9119

9121

### VENETIAN DUST



9195

9211

9235

### STREAKS



8714

8715

8716

8718

9125

9126

## STRUCTURES COLLECTION

---

### BAOBAB



9197

9198

9199

9200

9201

9202

# Discover our other collections



## THE WILTON COLLECTION

– A collection of traditional Wilton woven carpets and stair runners





#### **COLLABORATION**

– In collaboration with the awarded duo Folkform, we have created a stunning monochrome collection of jute and wool, pushing the boundaries of traditional manufacturing techniques.



## Houses

Studioscott

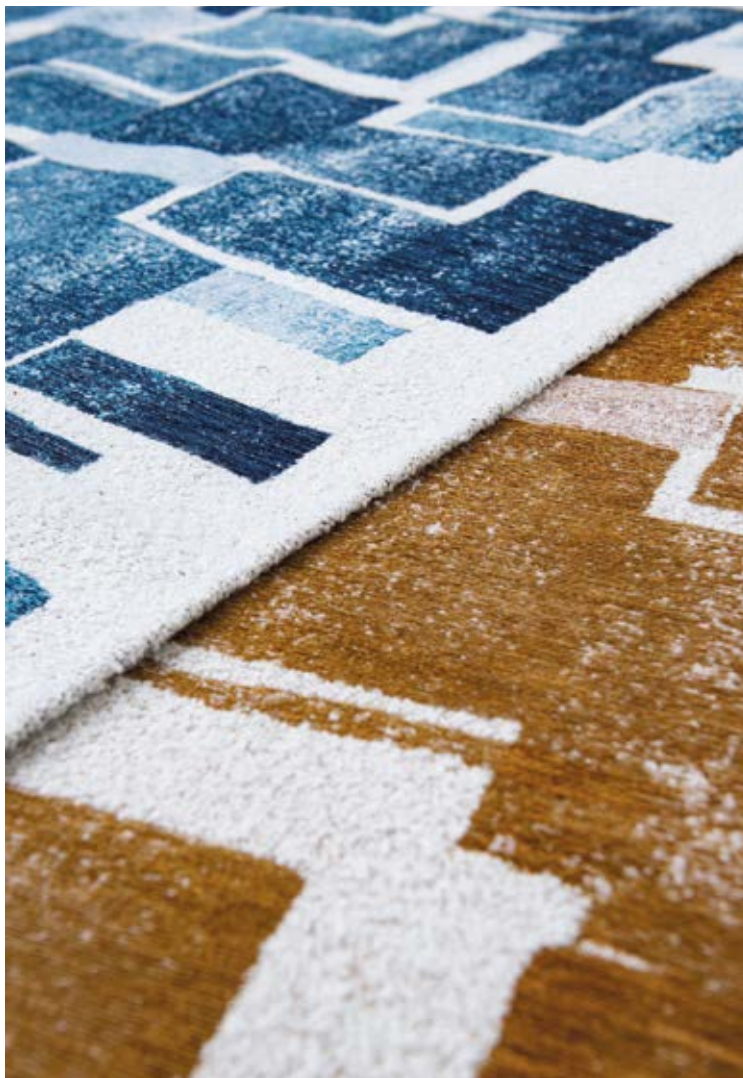
[www.studioscott.be](http://www.studioscott.be)

Les maisons de Zoë

[www.lesmaisonsdezoe.com](http://www.lesmaisonsdezoe.com)







© 2024 LOUIS DE POORTERE  
Rue de la Royenne 45B - 7700 Mouscron - Belgium  
Phone : +32 56 393 393 | Email : info@ldp.be

@louis.de.poortere



made in belgium  
louisdepoortere.com