



 **SPORT
COURT**
OUTDOOR SURFACES

Sport Court®
Share more than sport

Gerflor®

TABLE OF CONTENTS

GERFLOR, WHERE CHAMPIONS PLAY	4	5
DESIGNED FOR MULTI-SPORTS	6	7
THEY TRUST US	8	9
LONG-LASTING AESTHETICS	10	11
OPTIMAL PLAYABILITY AND SAFETY	12	13
SAVE TIME AND MONEY	14	15
POWERGAME+ PRODUCT BENEFITS	16	17
A GREATER COURT WITH FINISHING PROFILES ...	18	19



GERFLOR, WHERE CHAMPIONS PLAY

For more than a century, Gerflor has provided sports flooring solutions that enable millions of people, from children to professionals, to play and share moments. With its 4 brands, Gerflor Sport now hosts 50 worldwide sports events every year.



SPORT
COURT

SHARING MORE THAN SPORT!

BRING PEOPLE TOGETHER FOR UNFORGETTABLE MOMENTS AND LIFETIME MEMORIES

With our modular PowerGame+ tiles, we offer everyone the opportunity to share such memorable sport and recreational experiences.

Our premium surfaces are not only fun, great-looking and safe to play on, but they can also be easily installed in all facilities. You can be sure you're providing the ideal playing outdoor surface for every practice and ambitions, from children to champions.



HARDWOOD FLOORING:

MORE THAN 100 YEARS OF EXPERIENCE

Founded in 1872, Connor Sports® is the market leader in portable and permanent hardwood sports flooring systems.

Connor Sports® professional engineers lead the industry in new product design and development, setting the standard for innovative solutions in sports surfacing.

TARAFLEX

INDOOR FLOORING:

THE BEST PERFORMING PRODUCTS ON THE MARKET

Since 1947, Taraflex has been one pioneer in developing synthetic floors and is today the world leading brand for indoor sports floors.

Its complete range offers the perfect solution to all users and applications, with the highest standards, in terms of performance, comfort and environment.



LINOLEUM FLOORING:

HISTORIC LEADER IN LINOLEUM SPORT FLOORING

DLW Linoleum has been manufacturing high class sport linoleum for over 100 years and is proud to deliver uncompromising product quality.

Adapted to both specific and multi-function use, linoleum high performance floors are a great option to address various applications, from kindergartens to multipurpose halls, with acknowledged sustainable features.

DESIGNED FOR

MULTI-SPORTS

Sport Court surfaces are designed for a wide variety of sports. All game courts can be easily configured to accommodate basketball, futsal, handball, tennis and more, without compromising on playability or safety. A number of temporary or permanent applications are possible, from multi-sport school facilities to multi-use game areas to all kinds of sporting events.



THEY

TRUST US

PARTNER OF SPORTS FEDERATIONS

Sport Court surfaces are used at the highest levels of competition by leading sports federations around the world. Our courts are perfect for both temporary events and permanent installations.

100 000

courts installed since 1974

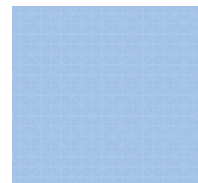


LONG-LASTING

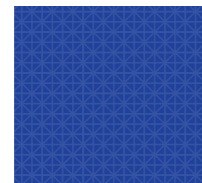
AESTHETICS

Design a court that makes an impression. With a selection of 10 fade-resistant tile colours, you have more ways to customise the look of your playing surfaces to fit your requirements, whether you want a fun colourful court, or to customise it with your company's or school's colours.

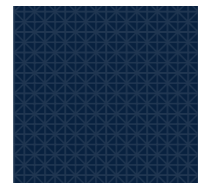
CHOOSE YOUR COLOURS



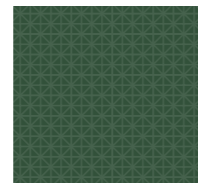
STEEL BLUE



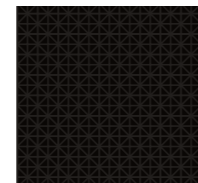
BRIGHT BLUE



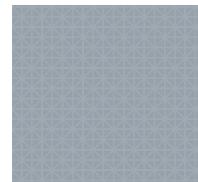
DARK BLUE



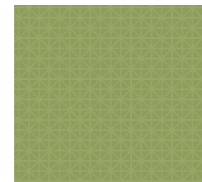
GREEN



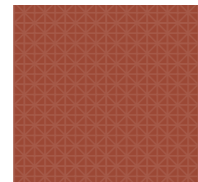
BLACK



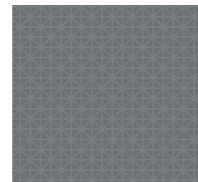
GRAY



KIWI



TERRACOTTA



GRANITE



BRIGHT RED



**CUSTOMISE YOUR COURT
BY EASILY ADDING LOGOS
AND GAME LINES, AND MAKE
IT UNIQUELY YOURS!**



OPTIMAL PLAYABILITY AND

SAFETY

Powergame+ tiles provide exceptional protection against abrasion, head injuries and joint strain. Extensive third-party testing ensures that athletes of any age remain safe while playing and competing on Sport Court surfaces.

ACCOMMODATE MANY SPORTS WITH UNMATCHED PLAYABILITY AND SAFETY.



POWERGAME+ ENHANCES GAME EXPERIENCE

- highly versatile multisport surface
- same dribbling response as a hardwood flooring
- remarkably stable surface

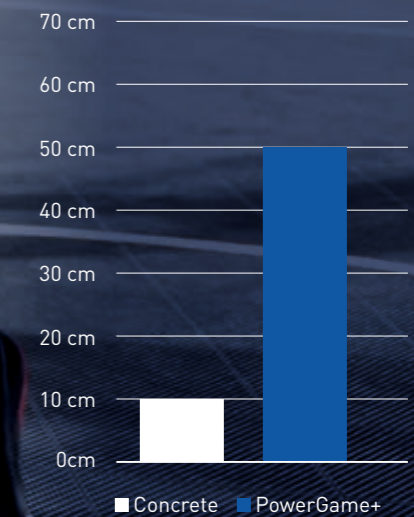
POWERGAME+ PROVIDES A UNIQUE BALANCE BETWEEN SAFETY, COMFORT AND DURABILITY

- High tile stability optimises ball rebound and game performance
- Improved water drainage enables faster drying and playability after rain
- Low skin abrasion protects players when falling without compromising on traction

SUPERIOR IMPACT PROTECTION

A head impact from just 10 cm above a concrete surface can cause a concussion. Sport Court tiles are significantly more forgiving, with PowerGame+ reducing the likelihood of a serious head injury from a fall of 50 cm

Critical Fall Height is a test used in conjunction with the European Standards EN 1177-2018, used for evaluating playground surfaces, such as sand, wood chips, resilient rubber and asphalt.



TIME AND MONEY

SAVING

QUICK AND COST-EFFECTIVE REFURBISHMENTS

OLD ASPHALT COURTS TURNED NEW AND BEAUTIFUL AGAIN IN JUST A DAY

Make the most of your existing facilities. Sport Court's patented, interlocking tiles easily overlay outdated concrete, asphalt and acrylic surfaces. Now, you can repurpose underutilised courts and free up space for more sports and recreational programming. Sport Court tiles come in a wide range of vibrant colours, allowing you to design eye-catching surfaces that enhance your recreation areas. What's more, Sport Court surfaces are guaranteed to keep their good looks for years to come with minimal maintenance.



EASY INSTALLATION AND MAINTENANCE

THE SIMPLE AND STRONG INTERLOCKING SYSTEM ENABLES THE INSTALLATION OF A 1,000 SQM COURT IN 4H

With a packaging of 40 tiles, in ranges of 8 pre-assembled tiles, the installation is easy and fast.

The installation of finishing solutions and the painting of game lines will perfect the court transformation.

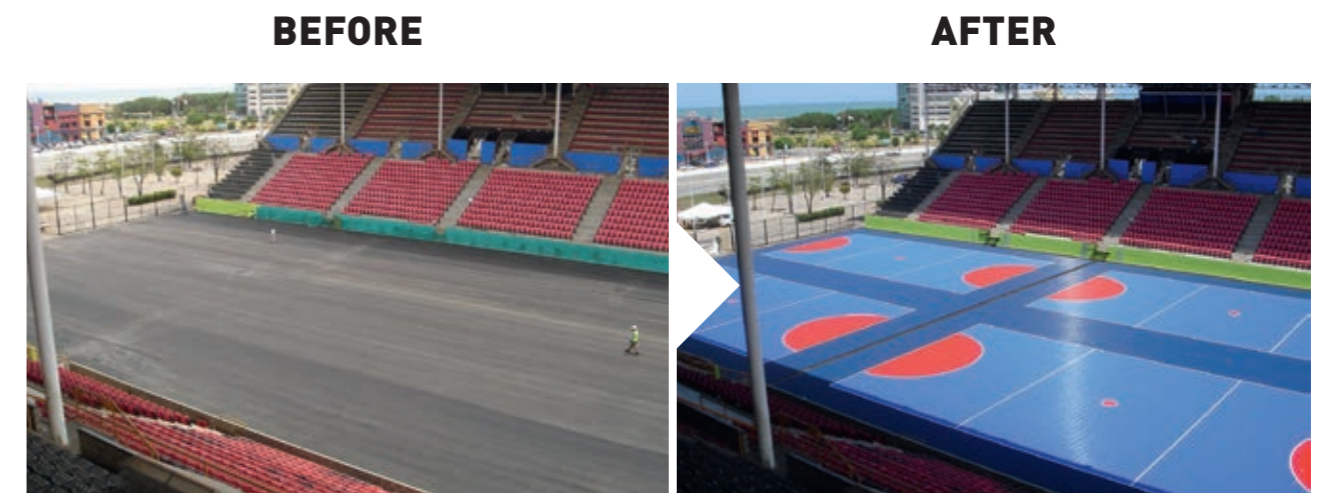
Dissassembly is as easy and quick as assembly.

PowerGame+ has high durability with no yearly or costly refinishing. No sanding is required as for synthetic grass... All the dirt will be drained out of the tiles thanks to the rain !

Our local technical team will be your partner at every step to provide a responsive support.

1,000M² COURT = 4H COURT INSTALLATION + 2H GAME LINE PAINTING

WITH A 4-PERSON TEAM

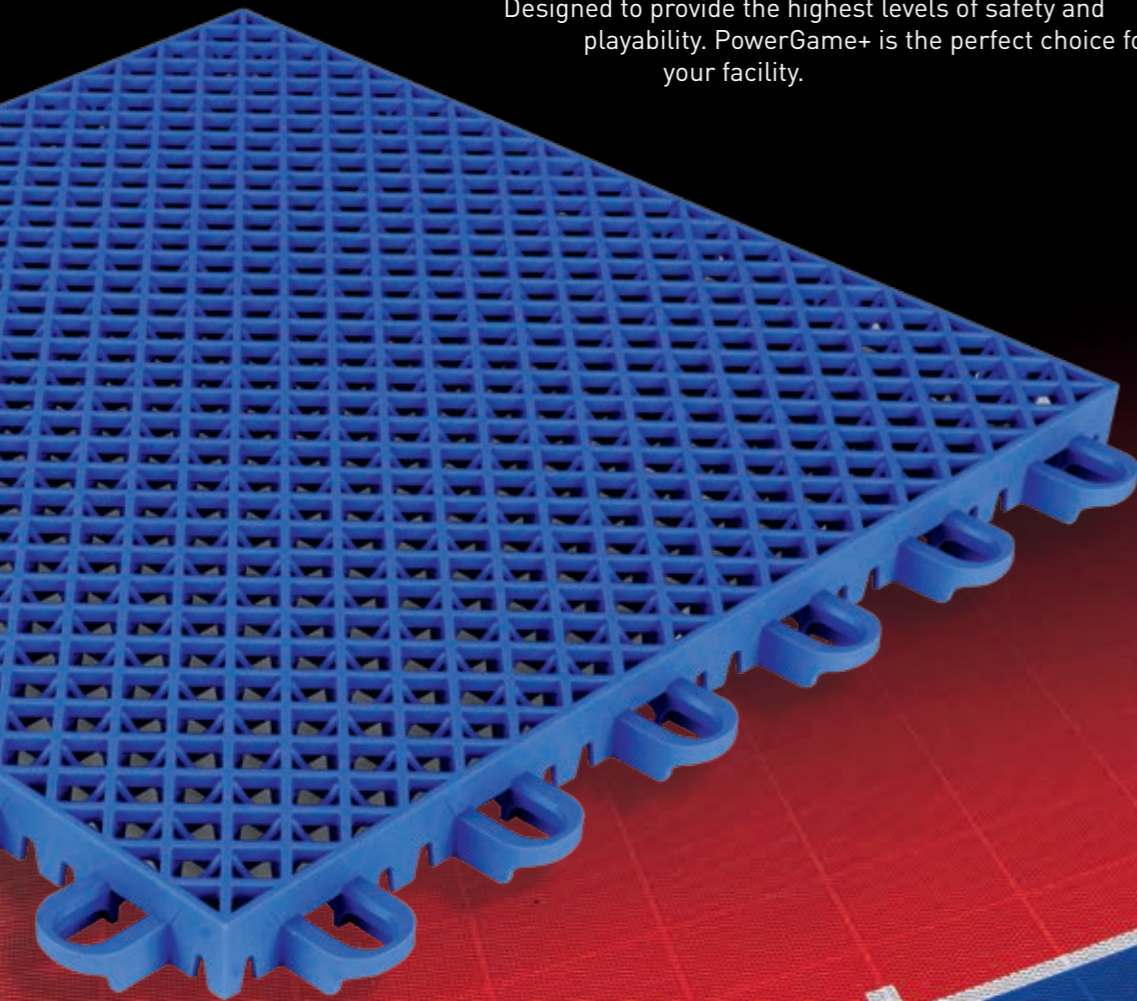


PRODUCT BENEFITS OF

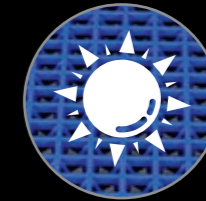
POWERGAME+

THE NEXT STEP IN MULTI-SPORTS OUTDOOR SURFACING.

Designed to provide the highest levels of safety and playability. PowerGame+ is the perfect choice for your facility.



LONG-LASTING AESTHETICS



UV PROTECTION
OUTSTANDING COLOUR
DURABILITY

EXTREME DURABILITY

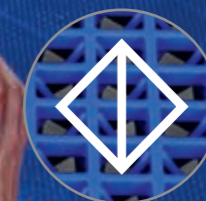


**WIDE AND DEEP
CONNECTION LOOPS**
HIGH STABILITY AND
DURABILITY OVER
INSTALLATION AND
REMOVAL, SAFETY OF THE
PLAYERS

OPTIMAL PLAYABILITY

OPTIMAL GRID DESIGN

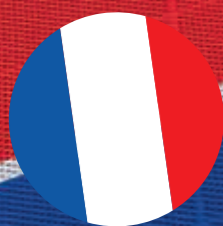
DOUBLE-GRID STRUCTURE FOR FASTER
DRYING, REDUCED WATER REBOUND, AND
OPTIMAL SAFETY



TOP-GRID :
"OPEN DIAMOND"
DESIGN FOR BETTER
DRAINAGE



LOWER GRID :
"SADDLE" SHAPE
TO PREVENT WATER
RETENTION



MADE IN FRANCE

A GREATER COURT WITH FINISHING

PROFILES

Discover our complete range of finishing profiles, adapted to every court configuration.

POLYPROPYLENE PROFILES

- Easy and fast installation
- Beautiful additional elements to finish the court



EDGE MALE
30.5 x 9.5 x 1.9 cm



EDGE FEMALE
30.5 x 9.5 x 1.9 cm



CORNER EDGE
9.5 x 9.5 x 1.9 cm

METAL PROFILES

- Resistance to harsh weather conditions and to vandalism thanks to the anchored installation
- Beautiful additional elements to finish the court

CORNER & RAMP EDGES
148 x 19 x 2.4 cm





Y1000313

we care / we act Our Commitments for a Sustainable future



CARBON FOOTPRINT*
-20 % kg

CO₂ equivalent/m²
between 2020 and 2025



BIOSOURCED CONTENT**
10 % by 2025



RECYCLED CONTENT
30 % by 2025



ADHESIVE FREE***
35 % by 2025



ANNUAL VOLUME RECYCLED
60 000 t by 2025



* Scopes 1 and 2 defined in the GHG protocol ** % of activity with biosourced materials *** % of activity - adhesive free solution