

Axor Urquiola

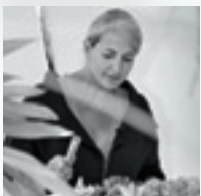
Awakening your Senses



AXOR[®]
hansgrohe

Our private living space is a mirror of our personality. A charming fusion of different styles and objects, of memories and emotions. In the course of time, everything finds its place – whether intentionally or at random, whether it be something handed down to you by your grandmother or discovered while you were travelling, whether it be modern or classic in origin. In this way, every living space tells its own, very individual, story. It is the story and the desires of the people who live in this space and who provide it with a character all of its own.

The change and the interaction of personal styles is the foundation of the new Axor Urquiola collection. The Spanish designer Patricia Urquiola is inspired by people and their changing desires. A far cry from traditional norms, conventions and rigid structures, her design is a celebration of detail, variety, sensuality and vibrant energy. The entire collection is characterised by flowing transitions, soft shapes and gentle curves. Every single element has its own charming and endearing qualities.



In a living space that allows you maximum freedom, all the elements come together in harmony. Take advantage of this new freedom to release your own, invigorating mix of styles and create your personal retreat. With Axor Urquiola, the line between bathroom and living area, between today and tomorrow becomes fluid. It offers an invigorating freedom that awakens our senses – every day anew.









Sensual perfection for your personal blend of styles: the noble, luxurious surfaces, the soft shapes and flowing transitions accentuate the collection's air of harmony and variety.









Bathroom and bedroom melt together into a single generous living space. With Axor Urquiola, your lifestyle finds its reflection in your personal space.





The fusion of different elements, shapes and functions creates a harmonious overall impression, masterfully combining innovative functionality with visionary design.





Distinctive design offers variety in the bathroom: Whether it be a single lever mixer, a twin handle or 3-hole-mixer, whether it be mounted on the wall or on the vanity unit: The collection harmoniously blends into the most diverse of living spaces.









Time to indulge in memories: The shape of the bath tub and the wash bowls is inspired by an antique zinc wash tub. The integrated handles serve as convenient towel holders.









From the single hook to the toothbrush tumbler, from the towel holder to the soap dish: With Axor Urquiola you can perfect the atmosphere in your bathroom down to the smallest detail.





Far more than just a partition: With the modular, flexible partition elements nearly any wish can be fulfilled – from an intimate, personal screen to a wall-mounted or free-standing heater.

Basin



Single lever basin mixer
11020000
Single lever basin mixer
without waste
11021000
Single lever basin mixer
with copper pipes
11022000



Single lever basin mixer
for wash bowls
11023000
Single lever basin mixer
for wash bowls without waste
11034000



Single lever basin mixer
for small basins
11025000



Single lever basin mixer
for concealed installation
11026000
Basic set (not shown)
10902180



3-hole basin mixer with plate
11040000*



3-hole basin mixer without plate
11041000



3-hole wall-mounted basin mixer,
concealed installation spout 168 mm
projection
11042000
Basic set (not shown)
10303180



3-hole wall-mounted basin mixer,
concealed installation spout 228 mm
projection
11043000
Basic set (not shown)
10303180

*Only applicable on even, smooth surfaces.

Bidet



Pillar tap
11120000



Single lever bidet mixer
11220000



3-hole bidet mixer
11223000

Bath



Single lever bath mixer for exposed fitting
11420000



Single lever basin mixer for concealed installation
Finish set # 11425000
Single lever basin mixer for concealed installation, with Safety function
Finish set # 11426000
Basic set iBox® universal
01800180



Freestanding thermostatic bath mixer
11422000
Basic set (not shown)
10452180



Bath spout 171 mm
11430000



Bath spout 231 mm
11431000

Shower



Single lever shower mixer for exposed fitting
11620000



Single lever shower mixer for concealed installation
Finish set # 11625000
Basic set iBox® universal
01800180



Porter unit
11626000



Bath spout/porter combination
11435000
Basic set iBox® universal
01800180

Thermostat/Valves



Thermostat for concealed installation
Finish set # 11730000
Highflow Thermostat for concealed installation
11731000
Basic set iBox® universal
01800180



Thermostat for concealed installation with shut-off valve
Finish set # 11732000
Basic set iBox® universal
01800180



Thermostat for concealed installation
with shut-off and diverter valve
Finish set # **11733000**
Basic set iBox® universal
01800180



Shut-off valve for concealed installation
Finish set # **11960000**
Basic set
DN15 with spindle # **15973180**
DN15 ceramic seal # **15974180**
DN20 with spindle # **15970180**



Trio®/Quattro® diverter valve
Finish set # **11925000**
Basic set
Trio® # **15981180**
Quattro® # **15930180**

Accessories



Toothbrush tumbler with holder
42434000



Soap dish
42433000



Bath towel rail
External dimensions 640 mm
42460000

Bath towel rail
External dimensions 840 mm
42480000



Grab rail
External dimensions 320 mm
42430000



Towel hook
42401000



Roll holder
42436000



WC brush holder (freestanding)
42435000

Wash basin



Wash bowl 625 mm,
molded mineral,
(only in conjunction with
basin mixers without pull rod)
11300000



Wash basin 625 mm,
wall-mounted, molded mineral
11302000



Wash bowl 500 mm,
molded mineral,
(only in conjunction with
basin mixers without pull rod)
11301000

Bath tub



Bath tub 1800 mm, free-standing,
mineral molded, incl. waste and
overflow set, Filling capacity
approx. 180 l (1 person 70 kg)
11440000



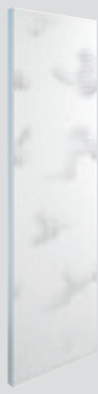
Chrome
(-000)

Heater, wall mounted



Heater, wall-mounted
Pattern „Clouds“,
1840 x 553 x 82 mm (H,W,D),
heat capacity approx. 980 Watt
(75/65/20°) EN 442
42501000

Partition heater



Partition heater
Pattern „Clouds“,
1840 x 553 x 50 mm (H,W,D),
heat capacity approx. 730 W
(75/65/20°) EN 442
42500000**
Basic set **# 42512180**



Partition heater
Mirror (one side)/pattern „Clouds“
1840 x 553 x 50 mm (H,W,D),
heat capacity approx. 730 W
(75/65/20°) EN 442
42510000**
Basic set **# 42512180**

**for reasons of stability, at least 2 partition elements are required for a free-standing installation

Partition



Partition
Pattern „Clouds“,
1840 x 553 x 50 mm (H,W,D)
42505000**
Basic set **# 42512180**



Partition
Mirror (one side)/pattern „Clouds“
1840 x 553 x 50 mm (H,W,D)
42511000**
Basic set **# 42512180**

Basic set



Basic set for partition
and partition heater
42512180

Accessories



Swivel mirror
1840 x 241 x 13 mm (H,W,D)
42513000



Towel hook
42515000



Bath towel rail
External dimensions 465 mm
42516000

Wall Holder for partition
(not shown)
42514000

Bathroom Architecture: Studio Urquiola, Milan; **Photography:** Alessandro Paderni / Eye studio, Udine;
Styling: alessandramonti studio, Como; **Set building:** Ideaeffe; **Special thanks to:** Moroso, B&B Italia, Kartell,
Paola Lenti, Flos, Emu, Bmorone, De Padova, MDL Cernobbio, Eugenio Castiglioni, Decro, Punto Uno Arreda,
Mutina Tiles, Elena Piussi Azienda Agricola, G.T. Design

Cyprus – Hansgrohe · Middle East & Africa Limited · Artemisia Buisness Center
14 Charalambou Mouskou Office 201 · CY-2015 Strovolos · Nicosia · Cyprus
Tel. +357 22 441370 · Telefax +357 22 441374 · nicosia@hansgrohe.com · www.hansgrohe-mea.com

Great Britain – Hansgrohe · Units D1 and D2 · Sandown Park Trading Estate, Royol Mills GB-Esher · Surrey · KT108BL
Tel. +44 (0) 1372 465 655 · Fax +44 (0) 1372 470 670 · info@hansgrohe.co.uk · www.hansgrohe.co.uk

India – Hansgrohe India (pvt.) Ltd. · Office Nos. 601 - 604 · Sky Station Viman Nagar · 411 016 Pune · Maharashtra
India Tel. +91 20 6625 9595 · info@hansgrohe.in

Portugal – Hansgrohe · Rua Antoine de Saint Exupéry Alapraia · P-2765-043 Estoril
Tel. +351 21 4667110 · Fax +351 21 4667119 · hansgrohe@jrb.pt · www.hansgrohe.com

Singapore – Hansgrohe Pte. Ltd. · 69 Mohamed Sultan Road · Singapore 239015
Tel. +65 6884 5060 · Fax +65 6884 5070 · info@hansgrohe.com.sg · www.hansgrohe.com.sg

AXOR[®]
hansgrohe

Axor-Hansgrohe AG · P.O.Box 11 45 · D-77757 Schiltach · Phone +49 78 36 51-0
Telefax +49 78 36 51-13 00 · info@axor-design.com · www.axor-design.com

